

**General malaria information:** predominantly *P. falciparum*. Transmission occurs throughout the year and is highest from September through May, particularly from January through April.

## Location-specific recommendations:

**Chemoprophylaxis is recommended for all travelers:** certain districts in Limpopo, Mpumalanga, and KwaZulu-Natal provinces, including Kruger National Park and neighboring game reserves; all cities, towns, and parks within these areas except the central urban area of Mbombela.

**Chemoprophylaxis is recommended for certain travelers (see Issues to Consider box):** certain districts in Limpopo and KwaZulu-Natal provinces; all cities, towns, and parks within these areas except Richards Bay.

**Insect precautions only are recommended (negligible transmission is reported):** the central urban area of Mbombela; throughout certain districts in Limpopo Province; rural areas of certain districts in Mpumalanga and KwaZulu-Natal provinces.

**No preventive measures are necessary (no evidence of transmission exists):** the cities of Pretoria, Johannesburg, Cape Town, Richards Bay, and all other major cities and resort areas; all other areas not mentioned above.

**Preventive measures:** Travelers should observe insect precautions from dusk to dawn in areas with any level of transmission. Atovaquone-proguanil (Malarone or generic), doxycycline, mefloquine, and tafenoquine are protective in this country. G6PD testing is required prior to tafenoquine use.

## Issues to Consider

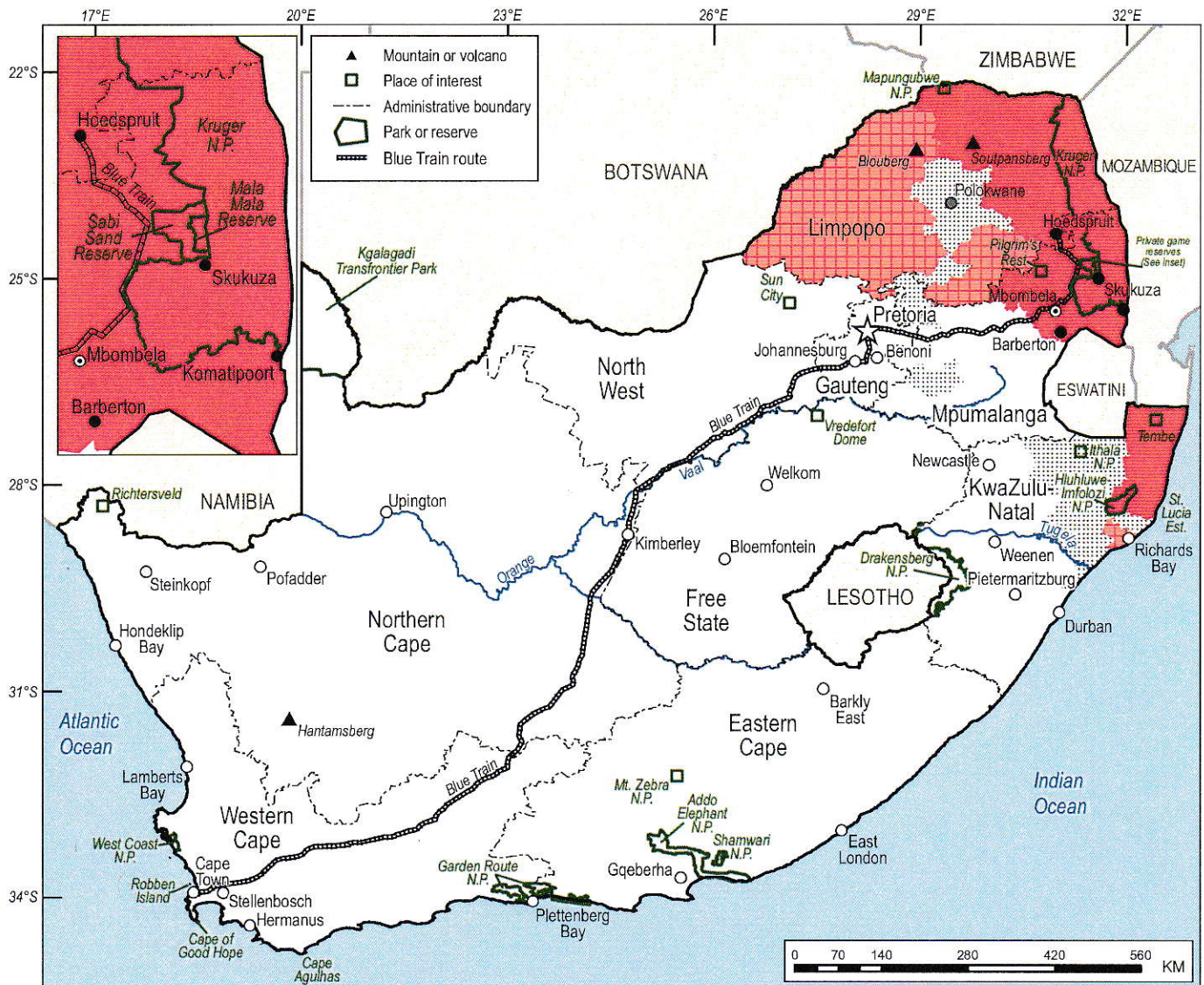
### Factors favoring chemoprophylaxis

- Adventure travel
- Risk-averse and vulnerable travelers
- Areas subject to infrequent epidemics
- Immigrants visiting friends and relatives
- Flexible itineraries
- Travel longer than 1 month
- Unreliable medical expertise and/or treatment drugs at destination

### Factors against chemoprophylaxis

- Air-conditioned hotels only
- Urban areas only
- Non-transmission season
- Minimal exposure from dusk to dawn
- Travel shorter than 3 days

For more information, see *Technical Explanation of Malaria Mapping*.



## KEY for Location-Specific Recommendations — Travelers should observe insect precautions from dusk to dawn in areas with any level of transmission.

- Chemoprophylaxis is recommended for all travelers.\*
- Chemoprophylaxis is recommended for certain travelers; see *Issues to Consider* box.
- Insect precautions only are recommended\* (negligible transmission is reported).
- No preventive measures are necessary (no evidence of malaria transmission exists).
- City where preventive recommendations are the same as the surrounding region.
- City where insect precautions only are recommended\* (negligible transmission is reported).
- City where insect precautions only are recommended in the central urban area\*; at city outskirts preventive recommendations are the same as the surrounding region.
- City where no preventive measures are necessary (no evidence of malaria transmission exists).
- ☆ National capital (no preventive measures are necessary).

\* Exceptions may apply. For more information, see *Technical Explanation of Malaria Mapping*.